

# STANDARD B-1 BOLLARD

APPROVAL:

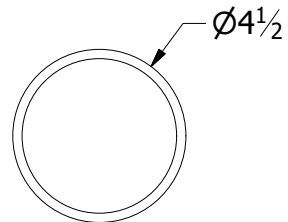
Signature authorizes Tournesol Siteworks to manufacture the product as shown

## SIZE AND THICKNESS

ALL STANDARD BOLLARDS MADE IN POWDER-COATED MILD STEEL W/ZINC-RICH PRIMER

BOLLARD

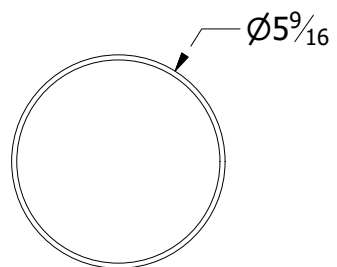
4"



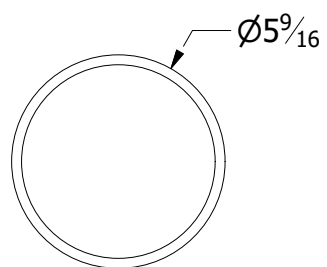
4" SCH 40 MS

BOLLARD

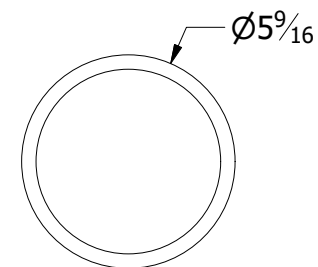
6"



5" SCH 10 MS



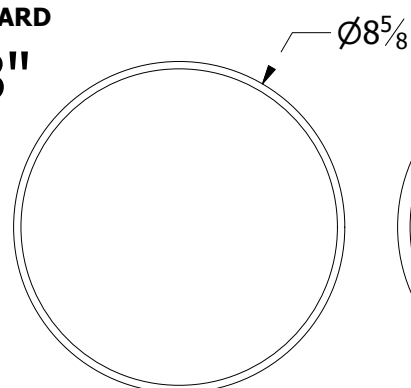
5" SCH 40 MS



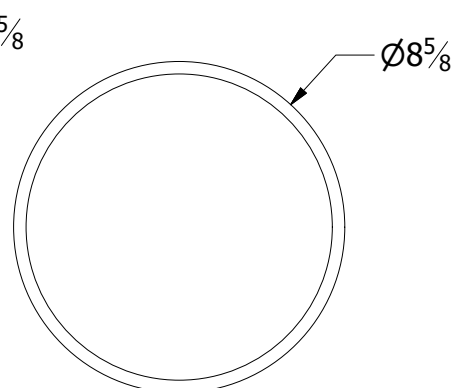
5" SCH 80 MS

BOLLARD

8"



8" .188" MS



8" SCH 40 MS

## HEIGHT

30"

36"

42"

48"

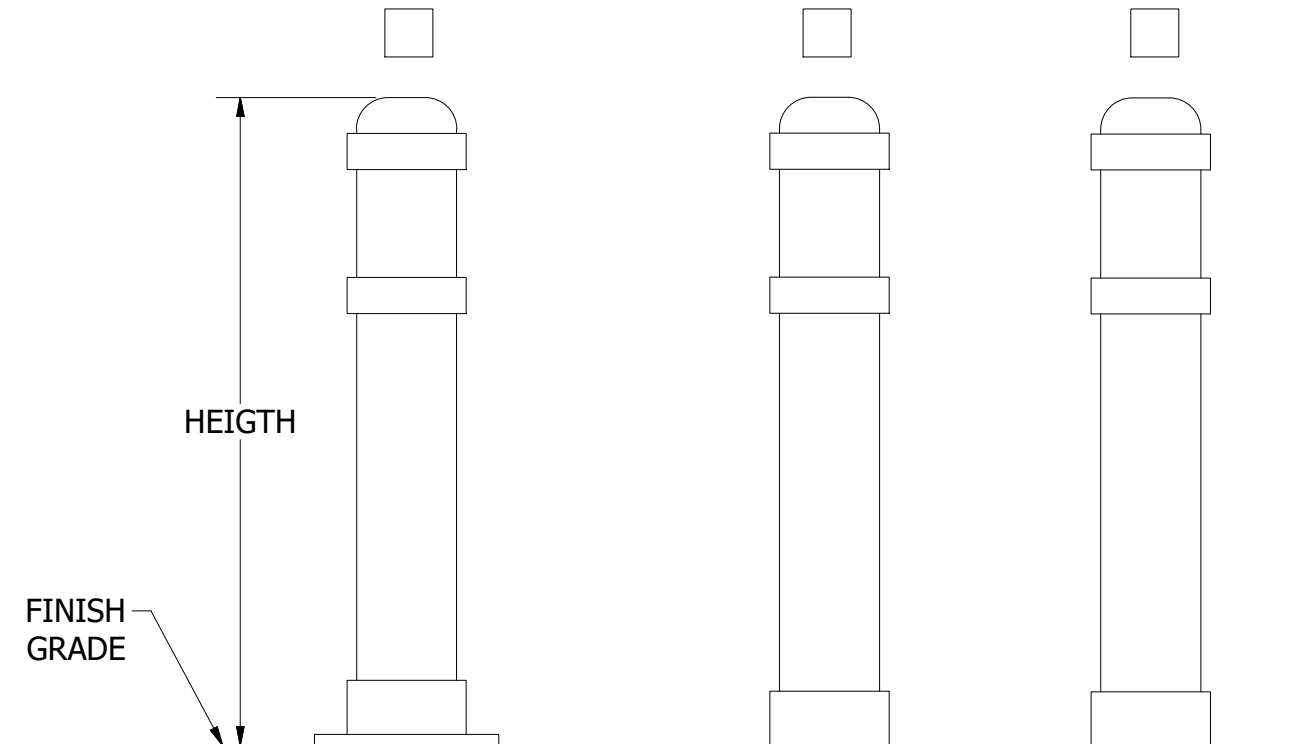
CUSTOM  
(SEE PAGE 2)

## MOUNTING

SURFACE MOUNT (SM)

EMBED

REMOVABLE (REM)

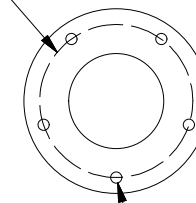


## HOLE PATTERN

4" BOLLARD = 4 BOLTS AT Ø 6 1/2"

6" BOLLARD = 5 BOLTS AT Ø 8 1/2"

8" BOLLARD = 5 BOLTS AT Ø 11 7/8"



5/8" FOR 1/2" ANCHOR BOLTS  
(ANCHOR BOLTS BY OTHERS)

EXCEPT FOR REPLACEMENTS,  
ALL REMOVEABLE BOLLARDS  
REQUIRE A RECEIVER  
(SOLD SEPERATELY), INQUIRE  
FOR DETAILS.

## STANDARD DEPTH


4" BOLLARD = 12" DEEP

6" BOLLARD = 18" DEEP

8" BOLLARD = 18" DEEP

CUSTOM (SEE PAGE 2)

COMPANY NAME: \_\_\_\_\_  
 CLIENT NAME: \_\_\_\_\_  
 DATE: \_\_\_\_\_  
 QUANTITY: \_\_\_\_\_  
 COLOR/FINISH: \_\_\_\_\_

 TOURNESOL SITWORKS 2930 Faber Street Union City, CA 94587		TITLE	B-1 APPLICATION SHEET
SIZE	DWG NO	REV	
B	B-1 APPLICATION SHEET	B	
ALL DIMENSIONS IN INCHES		SCALE: 3/32	DRAWN: DM
		7/21/2017	SHEET: 1 OF 2

# B-1 BOLLARD OPTIONS

(FOR FURTHER CUSTOMIZATION, CONTACT YOUR SALES PERSON)

**APPROVAL:**

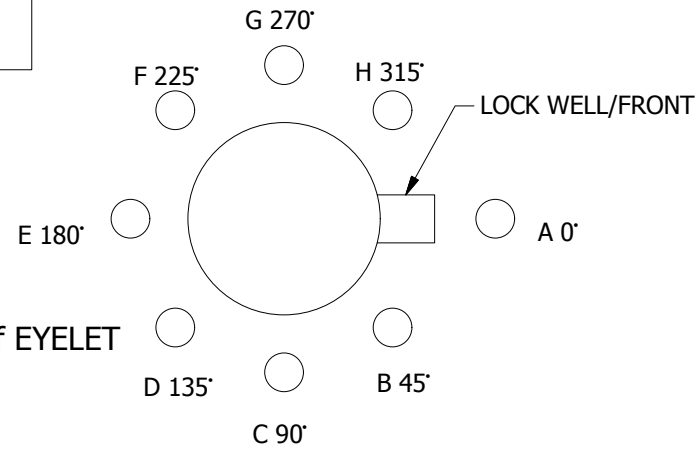
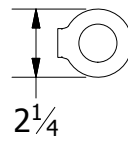
Signature authorizes Tournesol Siteworks to manufacture the product as shown

## EYELET (B-EB) (IF NONE WANTED LEAVE BLANK)

Quantity: \_\_\_\_\_ Number of EYELETS

Placement: \_\_\_\_\_ " Height from the ground to the center of EYELET

Orientation(s): Shade in bubbles to indicate position



B-HTG \_\_\_\_\_ (IN)  
(CUSTOM HEIGHT)

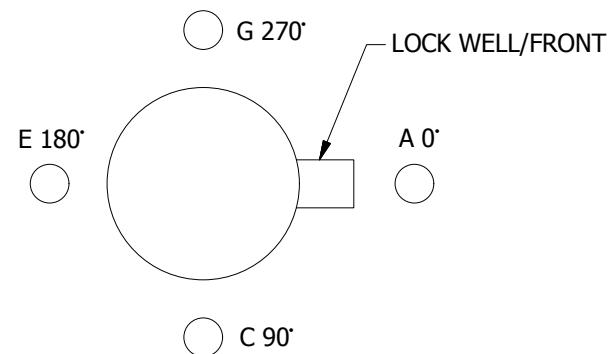
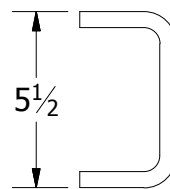
## HANDLE (B-HD) (IF NONE WANTED LEAVE BLANK)

**CHOOSE HOW MANY**

1 HANDLE  2 HANDLES

Placement: \_\_\_\_\_ " Height from the ground to the center of HANDLE

Orientation(s): Shade in bubbles to indicate position



B-EXT \_\_\_\_\_ (IN)  
(CUSTOM DEPTH)  
(FOR EMBED OR REM)

## TAPE (B-TAPE) (IF NONE WANTED LEAVE BLANK)

**CHOOSE A WIDTH**

1" TAPE  2" TAPE OTHER SIZES AVAILABLE

**CHOOSE A COLOR**

HIGH INTENSITY IN  RED  WHITE  YELLOW

ADDITIONAL ROW OF TAPE

Width \_\_\_\_\_

Type \_\_\_\_\_

Color \_\_\_\_\_

Placement \_\_\_\_\_ "

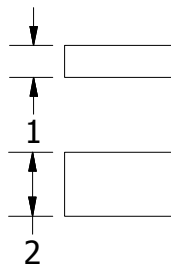
ADDITIONAL ROW OF TAPE

Width \_\_\_\_\_

Type \_\_\_\_\_

Color \_\_\_\_\_

Placement \_\_\_\_\_ "



Placement: \_\_\_\_\_ " Height from the ground to the center of TAPE

COLLAR OPTIONS: (IF NONE WANTED LEAVE BLANK)

### B-ARC

- ADD COLLAR(S) AT \_\_\_\_\_ " FROM THE GROUND (4)
- \_\_\_\_\_ " FROM THE GROUND (5)
- \_\_\_\_\_ " FROM THE GROUND (6)

### B-RRC

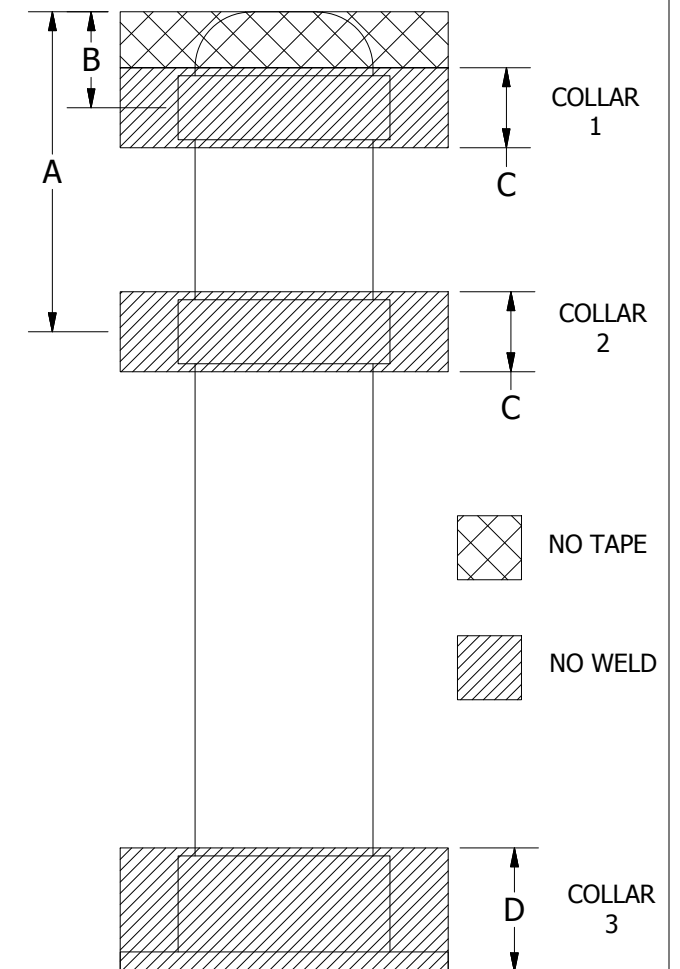
- REMOVE COLLAR(S)
- REMOVE COLLAR 1
- REMOVE COLLAR 2
- REMOVE COLLAR 3

### B-RIV

- ADD RIVETS TO
- COLLAR 1
- COLLAR 2
- COLLAR \_\_\_\_\_



DIM	4"	6"	8"
A	8.5"	10"	14"
B	2.5"	3"	4"
C	2.5"	2.5"	3.5"
D	4"	4"	5"
COLLAR (1,2) HEIGHT	2"	2"	3"



COMPANY NAME: \_\_\_\_\_  
 CLIENT NAME: \_\_\_\_\_  
 DATE: \_\_\_\_\_  
 QUANTITY: \_\_\_\_\_  
 COLOR/FINISH: \_\_\_\_\_